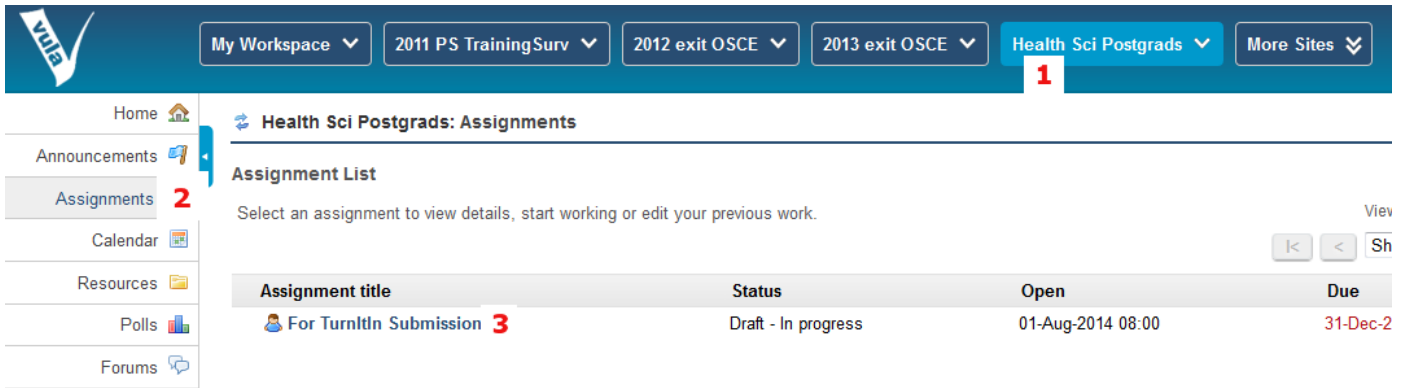



# Submitting to TurnItIn

The easiest is to do it via Vula. Please follow the following steps:



The screenshot shows the Vula interface. At the top, there is a navigation bar with tabs for 'My Workspace', '2011 PS TrainingSurv', '2012 exit OSCE', '2013 exit OSCE', 'Health Sci Postgrads', and 'More Sites'. The 'Health Sci Postgrads' tab is selected, and a red '1' is overlaid on it. Below the navigation bar, the left sidebar contains links for 'Home', 'Announcements', 'Assignments' (with a red '2' next to it), 'Calendar', 'Resources', 'Polls', and 'Forums'. The main content area is titled 'Health Sci Postgrads: Assignments' and contains an 'Assignment List' section. Below this section, there is a table with the following data:

Assignment title	Status	Open	Due
 For TurnItIn Submission <b>3</b>	Draft - In progress	01-Aug-2014 08:00	31-Dec-2

Log onto Vula using your student number and normal UCT password

1. Click on **Health Sci Postgrads** tab, if you do not see it on top, click **More Site** first.
2. Click **Assignments** on the left
3. Click the assignment titled, **For TurnItIn Submission**

## Assignment - In progress

Title	For TurnItIn Submission
Due	31-Dec-2014 23:55
Number of resubmissions allowed	Unlimited
Accept Resubmission Until	01-Jan-2015 08:40
Status	In progress
Grade Scale	Ungraded
Modified by instructor	01-Aug-2014 08:46

### Instructions

#### To submit your document:

- Click Add Attachments below
- Click Browse, find your file and click Open
- Click Continue
- Click Continue
- Click Submit
- Click ok

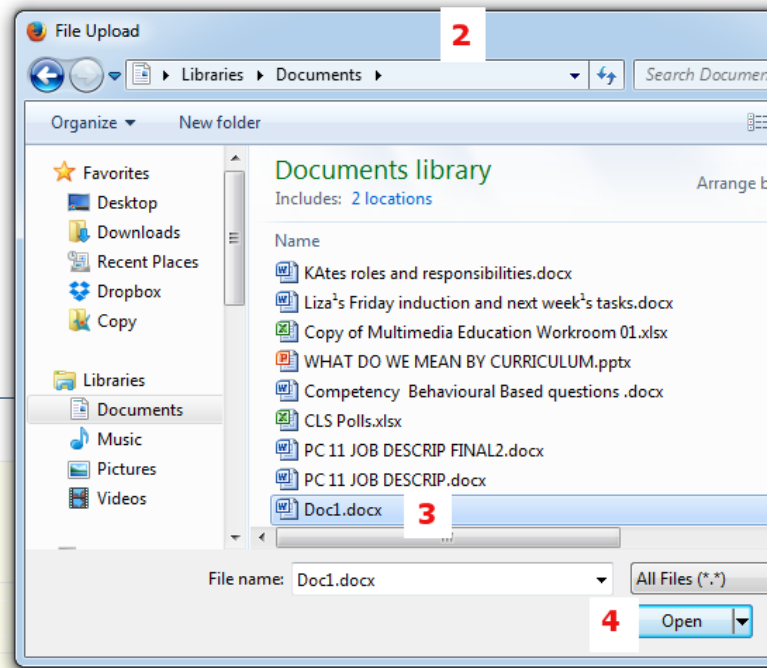
### Submission

#### Attachment

 Originality of attachments will be verified by Turnitin.

No attachment yet

Choose File: **1**  No file selected.



#### Plagiarism declaration:

- I know that plagiarism is wrong. Plagiarism is to use another's work and pretend that it is one's own.
- I have used the required convention for citation and referencing. Each contribution to and quotation in this assignment from the work(s) of other people has been attributed and has been cited and referenced.
- This assignment is my own work.
- I have not allowed, and will not allow, anyone to copy my work with the intention of passing it off as his or her own work.
- I acknowledge that copying someone else's assignment or essay, or part of it, is wrong, and declare that this is my own work.

**5**

(You must respond to submit your assignment.)

**6**  Don't forget to submit


After you clicked the title:

1. Click **Browse**
2. A new window will pop up and you can browse to where your document is, under My Documents, on your flash disk etc.
3. Select your document
4. Click **Open**
5. You will be returned to Vula, tick the Plagiarism tick box
6. Click **Submit**


Your report will generally be generated within an hour to 24 hours. To view your report:

Go back to Vula, same site, click the assignment title again.

Assignment has been submitted on 01-Aug-2014 09:40

Title	 For TurnItIn Submission
Due	31-Dec-2014 23:55
Number of resubmissions allowed	Unlimited
Accept Resubmission Until	01-Jan-2015 08:40
Status	Submitted 01-Aug-2014 09:40
Grade Scale	Ungraded
Modified by instructor	01-Aug-2014 08:46

Turnitin Report

 This attachment has been submitted and is pending review.

History Fri Aug 01 09:40:46 SAST 2014 Zelda Carlse (01286714) submitted

### Instructions

#### To submit your document:


- Click Add Attachments below
- Click Browse, find your file and click Open
- Click Continue
- Click Continue
- Click Submit
- Click ok

---

### Submission

#### Attachment

 Originality of attachments will be verified by Turnitin.

 Doc1.docx ( 285 KB; 01-Aug-2014 09:40 ) [Remove](#)

Your TurnItIn report will be a little blue, green, orange or red icon next to TurnItIn Report. Click on it to open it. If you would like to submit a revised or other document, click **Remove** and go through the process of submission again.